



INTERNAL PNEUMATIC POKER

USER AND MAINTENANCE MANUAL



Description and Use of the machine

You can use internal pneumatic vibrator for concrete on construction sites during casting to:

- Eliminate air or water bubbles in the mixture
- Make the mixture compact and homogeneous
- Improve the mechanical characteristic of the final product

The needle is made of a steel casing with chemical-mechanical characteristics that make it suitable for use against wear.

Inside the casing is housed an eccentric rotor operating with compressed air whose supply pressure is between 5 and 7 bar.

The pneumatic vibrator is equipped with a special manual on-off valve, which, once closed, isolates the vibrator from the compressed air distribution network, leaving the entire equipment at atmospheric pressure.

The correct functioning of the vibrator is ensured by the correct combination with a compressed air source that guarantees the respect of the technical data specified below for the various models

Technical Information

For a correct functioning, connect the vibrator to a compressed air system that respects the technical data indicated below

	Diameter (mm)	Head length (mm)	Air consumption	Pressure (bar)	Vibration (Nr/1')	Centrifugal Force (N)	Weight (kg)	Noise (dBA)
VHA 40	40	230	500	6	22000	2712	4,0	81
VHA 50	50	250	800	6	17000	5627	5,8	82
VHA 60	60	290	900	6	12000	9321	7,6	90
VHA 80	80	330	1300	6	11000	15829	14,2	91
VHA 100	80	395	2100	6	10500	22304	23,0	102
VHA 150	80	508	2880	6	10000	32460	38,0	115

Put in action

Before starting up, check the fixing of the rubber tube both to the needle and to the on-off valve

For a correct use carry out the following operations:

- make sure that shut-off valve is on “closed” position
- connect the vibrator to the compressed air distribution network using a threaded fitting compatible with the one on the shut-off valve (3/4 "Gas);
- pressurize the compressed air distribution network;
- open the shut-off valve keeping a solid grip of the rubber hose
- immerse the vibrator in the concrete

At the end of the work, remove the vibrator from the concrete, deactivate it by closing the shut-off valve and disconnect it from the compressed air distribution network (after checking that it is no longer under pressure)

It is advisable to use gloves that ensure a good grip and to wear protection devices against noise

In the event of the machine stopping due to lack of pressure in the compressed air distribution network, the operator must always close the on-off valve on the machine in order to avoid that uncontrolled restarting of the machine can cause the movement or the fall.

Maintenance

The vibrator does not require maintenance. Wash with water all the parts that have been immersed in the concrete.

These operations must be carried out ensuring that the machine is disconnected from the compressed air distribution network.

After use, position the vibrators with the vibrating element upwards and the tap facing downwards open, to allow the condensate and any impurity to drain off.

Repairs

For repairs and maintenance of the machine that require disassembly to replace component parts, refer to authorized dealers.

For any information, please contact:

COVIBRA S.r.l.
Via Zerbini 10/F
43100 PARMA (PR)
Tel. 0521-940100 – Fax 0521-940771
e-mail info@covibra.com

For any information or ordering of spare parts, refer to the exploded drawing with the relative list of components.

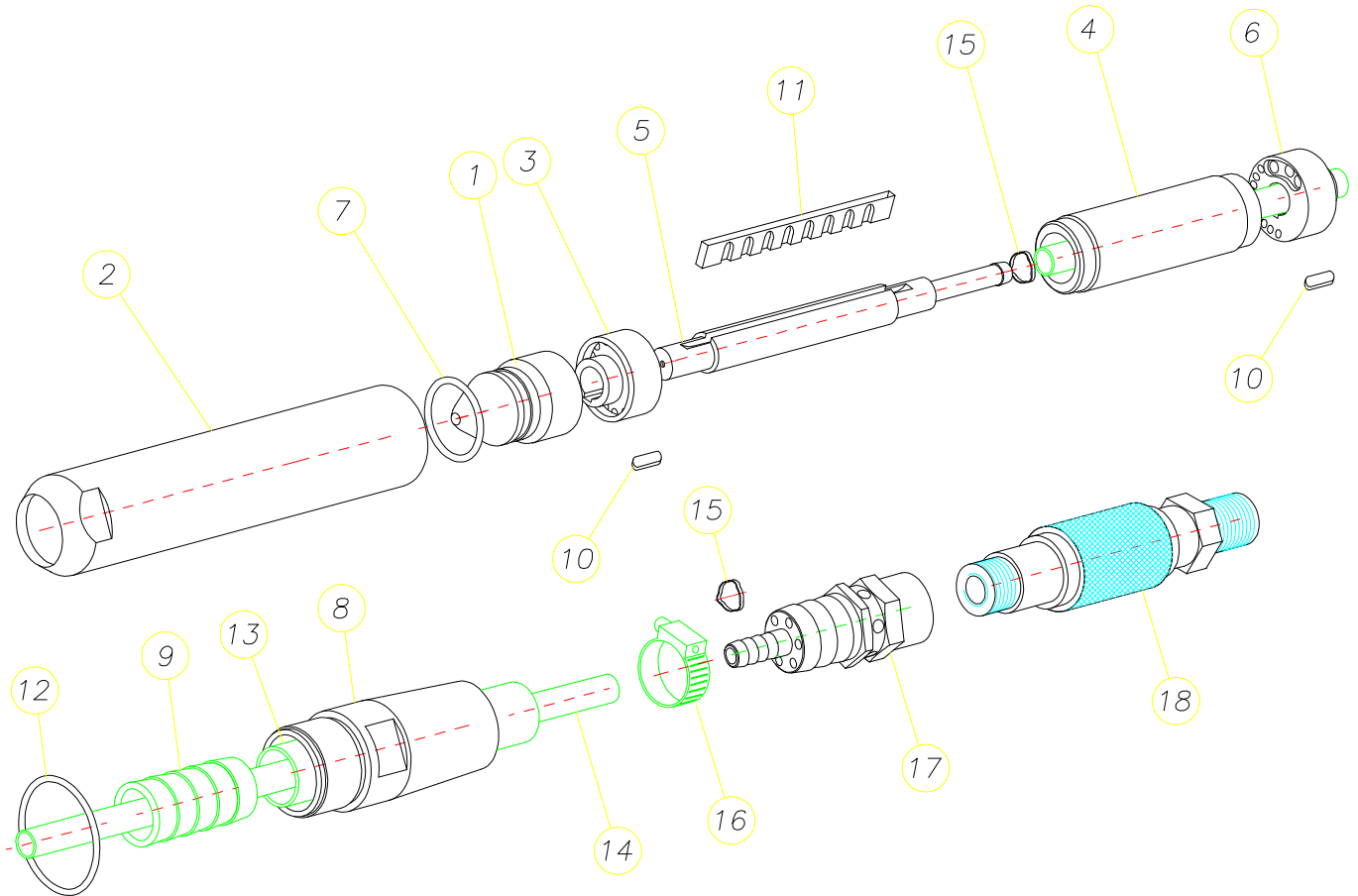
Only authorized personnel can perform repairs.

Spare Parts

Allegato I

VHA 40 – VHA 50 – VHA 60 – VHA 80**SPARE PARTS**

TYPE	DESCRIPTION
1/40 – 1/50 – 1/60 – 1/80	cap
2/40 – 2/50 – 2/60 – 2/80	External pipe
3/40 – 3/50 – 3/60 – 3/80	left flange
4/40 – 4/50 – 4/60 – 4/80	mass
5/40 – 5/50 – 5/60 – 5/80	shaft
6/40 – 6/50 – 6/60 – 6/80	right flange
7/40 – 7/50 – 7/60 – 7/80	cap o-ring
8/40 – 8/50 – 8/60 – 8/80	hose holder
9/40 – 9/50 – 9/60 – 9/80	Wedge
10/40 – 10/50 – 10/60 – 10/80	key
11/40 – 11/50 – 11/60 – 11/80	vane
12/40 – 12/50 – 12/60 – 12/80	Hose holder o-ring
13/40 – 13/50 – 13/60 – 13/80	External hose
14/40 – 14/50 – 14/60 – 14/80	Internal hose
15/40 – 15/50 – 15/60 – 15/80	Band-it internal hose
16/40 – 16/50 – 16/60 – 16/80	Band-it external hose
17/40 – 17/50 – 17/60 – 17/80	Nipple
18/40 – 18/50 – 18/60 – 18/80	valve



NOTE: for VHA 100 and VHA 150 contact COVIBRA S.r.l

COVIBRA
Declare
that pneumatic vibrators serie VHA :
conform with the following directive listed on the following declaration



UE DECLARATION OF CONFORMITY
DECLARATION OF INCORPORATION

According to the Machine Directive 2006/42/EC the family of PNEUMATIC POKER over mentioned are identified as "PARTLY COMPLETED MACHINERY"

"B" Type:

»These products are manufactured according to 2006/42/EC AND SUBSEQUENT AMENDMENTS

»These products must not be put into service until the final machinery into which it is to be incorporated has been declared in conformity with the provisions of this Directive, where appropriate.

According to Annex II B of Directive 2006/42/EC machines, the following essential requirements of safety and health protection are applied and respected:

1.1.1. - 1.1.2. - 1.1.3. - 1.1.5. - 1.3.1. - 1.3.2. - 1.3.3. - 1.3.4. - 1.3.6. - 1.3.7. - 1.3.8. - 1.3.9.
- 1.4.1. - 1.5.2. - 1.5.3. - 1.5.4. - 1.5.5. - 1.5.6. - 1.5.7 - 1.5.8. - 1.6.1. - 1.6.4. - 1.7.2. - 1.7.3.
- 1.7.4. - 1.7.4.1. - 1.7.4.2. - 1.7.4.3.

Technical documentation is compiled in accordance with part B of Annex VII.

COVIBRA S.r.l undertakes to transmit by mail or e-mail, in response to a reasoned request by the national authorities, relevant information on the products mentioned on the present declaration, except for intellectual properties of the producer. The technical documentation is kept at COVIBRA S.r.l, Via Zerbini, 10 – 43125 Parma (MO) Italy

Parma, li _____

(firma) _____